

KEYLESS ENTRY

— BALDWIN QUALITY —



Security & Convenience

- **One-touch locking with a motorized deadbolt**
- **Two customizable access codes**
- **Easy to install in a standard door prep**

BALDWIN®



8285.xxx.AC1
Soho Deadbolt

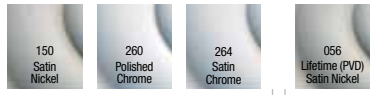


8252.xxx.AC1
Boulder Deadbolt



85386.xxx.ACRH (.ACLH)
Soho Sectional Trim
w/ 5485 Lever

Finishes



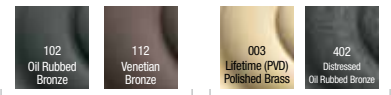
TIER 1

TIER 2



85353.xxx.ACRH (.ACLH)
Boulder Sectional Trim
w/ 5452 Beavertail Lever

Finishes



TIER 1

TIER 2

Keyless Entry Deadbolt Features

- Easy Install in Minutes w/ Screwdriver
- Fits Standard Tubular Door Prep
- No Hard Wiring Required
- 2 Customizable User Codes with Easy Add & Delete
- 4 to 8 Digit Codes
- One Touch Locking
- Back-Lit Keypad for Increased Visibility
- Incorrect Code Lockout Feature
- Customizable Features
 - Automatic Door Locking after 30 Seconds
 - Door Locked / Unlocked led indicator
 - Audible beep for activation
- 4 AA Batteries
- Low Battery LED Indicator
- Tapered Deadbolt Design
- Protective Coated Keypad Preventing Wear & Discoloration
- Automatic Handing Feature
- Solid Forged Brass Trim

Keyless Entry Deadbolt Specifications

Function	Single Cylinder Deadbolt
Door Prep	2 1/8" Bore, 1" Edge Bore
Backset	Adjustable 2 3/8" or 2 3/4"
Door Thickness	1.75" to 2.00"
Cylinder	5-Pin C-Keyway
Faceplate	1" Square Corner
Strike	Square Corner with reinforcing plate
Latch	1" Throw
Bolt	Brass, tapered w/ security pin
Door Handing	Automatic Handing

BALDWIN®

FAQ LIST

KEYLESS ENTRY

Does this product require a different installation?

No, fits a standard tubular deadbolt prep.

What is the estimated life of the batteries?

Approximately 1 year of standard use.

Is this product offered in an emergency egress function?

No, this product is not offered in an Emergency Egress function.

What cylinders are provided?

Uses a standard Images cylinder with an extended tail piece.

What latches are provided with this product?

The Keyless Entry Deadbolt products use a modified standard Images Deadbolt Latch that includes a tapered bolt & a modified latch cam.

Are there issues with the motorized bolt in regards to weatherstripping or warped door conditions?

The tapered bolt design was implemented in order to address these conditions.

Can I get additional finishes or split finishes?

No, these products cannot be extended into additional finishes or split finishes at this time.

What is the standard lead time for these products?

There will be an extended lead time period for the product launch, but after that the Keyless Entry products will maintain a standard Images product lead time of 3 weeks.

Are Keyed Alike sets offered?

No, not at this time. Product will need to be rekeyed in the field.

What is the Warranty?

The Keyless Entry Deadbolts carry a Standard Images Mechanical & Finish Warranty & a 1 Year Electronic Warranty.

Are batteries included?

No, AA batteries are not included & will need to be purchased separately.

HOW TO ORDER

**To Order Only a Deadbolt, Simply Order
& Specify the Finish:**



Example: 8285.150.AC1

**To Order Sectional Handleset, Order Both Deadbolt &
Sectional Handleset Kit (with Handing) & Specify the Finish:**

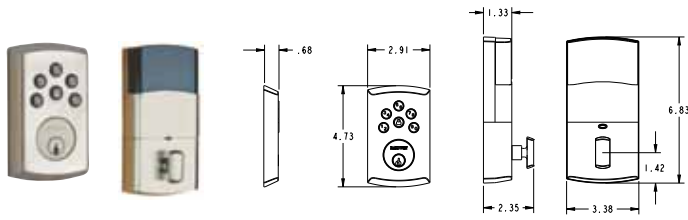


Example: 8285.150.AC1

+ 85386.150.ACRH

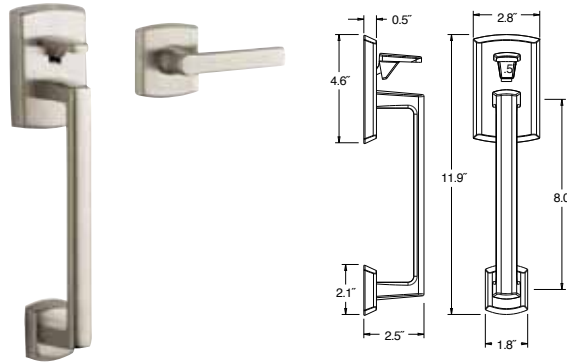
BALDWIN

**SOHO
DEADBOLT**

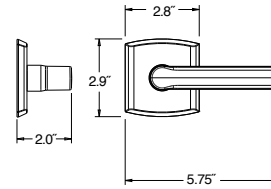


Item #	Description
8285.xxx.AC1	Deadbolt

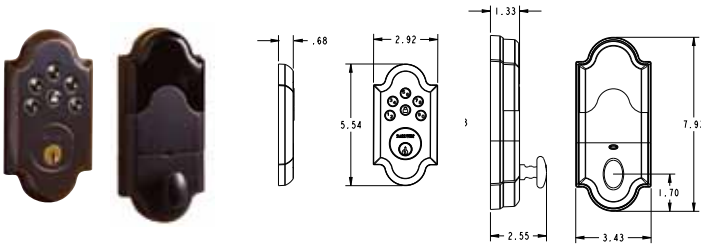
**SOHO
SECTIONAL
HANDLESET KIT**



Item #	Description
85386.xxx.ACRH (ACLH)	Sectional Entry Handleset Kit

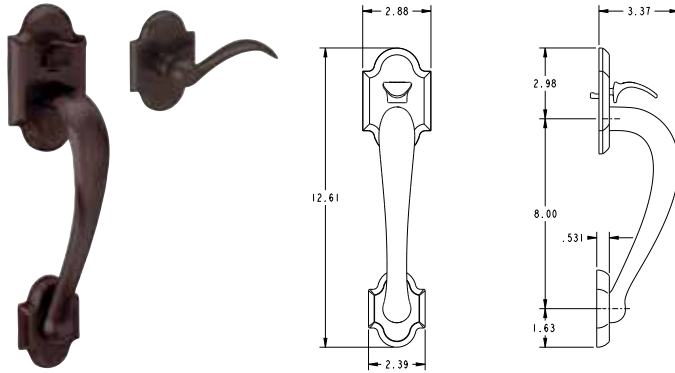


**BOULDER
DEADBOLT**

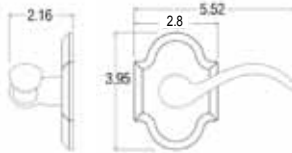


Item #	Description
8252.xxx.AC1	Deadbolt

**BOULDER
SECTIONAL
HANDLESET KIT**



Item #	Description
85353.xxx.ACRH (ACLH)	Sectional Entry Handleset Kit



BALDWIN®